



## Product Maintenance

### Battery maintenance

Batteries are consumables. The longer they are used, the shorter the usage time becomes.

- We guarantee twelve (12) months in general usage environments.
- The charging time is around one (1) hour.
- For purchase of additional batteries, please contact our service center or visit the online store.



### Filter maintenance

The dust filter can be water-cleaned. After cleaning the filter with water, dry it completely in the shade. Do not use any detergent.



### Main brush maintenance

The main brush can be water-cleaned. After cleaning the brush with water, dry it completely in the shade.

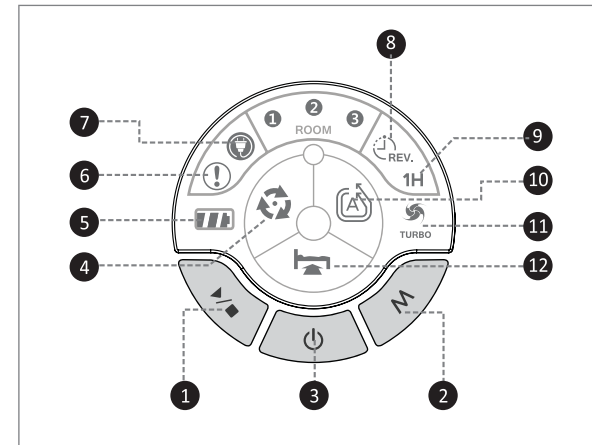
- Install the brush in the hexagonal direction of the right side.



## Information Display

### Control buttons and operation lamps

- ① Start/Stop button
- ② Mode setup button
- ③ Power On/Off button
- ④ Focused cleaning lamp
- ⑤ Battery lamp
- ⑥ System error lamp
- ⑦ Charging mode lamp
- ⑧ Daily reservation lamp
- ⑨ 1-hour reservation lamp
- ⑩ Automatic cleaning mode lamp
- ⑪ Suction input turbo lamp
- ⑫ Shadow cleaning mode lamp



## Remote Controller

### Descriptions for remote controller buttons



#### ① POWER button

Turns power on/off.  
If the product operation gets stopped due to errors, the button makes the product go back to the operation mode.

#### ② MODE button

Select the cleaning mode.

#### ③ START/STOP button

Starts selected operation  
Stops current cleaning.

#### ④ OK button

Acts as the [OK] button for various setup modes.

#### ⑤ DIRECTION buttons

In manual cleaning, moves the product forward and backward and make the product rotate in the left and right directions  
Selects setting values in setup of time and reservation



◆ Functions available with the main body of the robot cleaner:  
Automatic cleaning, shadow cleaning, focused cleaning, charging.

◆ Functions available with the remote controller:  
Automatic cleaning, shadow cleaning, focused cleaning, corner cleaning, manual cleaning, charging, suction control, reservation setting, mute, manual movement.

#### ⑥ CHARGE button

Moves the robot cleaner to the charger.

#### ⑦ VACUUM button

Adjusts the strength of suction.

#### ⑧ INTENSIVE button

Selects the focused cleaning.

#### ⑨ AUTO button

Selects the automatic cleaning or the basic cleaning mode.

#### ⑩ SHADOW button

Selects cleaning under the bed.

#### ⑪ MANUAL button

Used for manual cleaning operation.

#### ⑫ CORNER CL. button

Selects corner cleaning.

#### ⑬ MUTE button

Turns on/off operation announcement tone.

#### ⑭ RESERVE button

Used to make reservation setup.

#### ⑮ MS(motion control) button

Press this button to use the remote controller as motion-controlling tool.

# Robot Cleaner MR6550 QUICK USER GUIDE

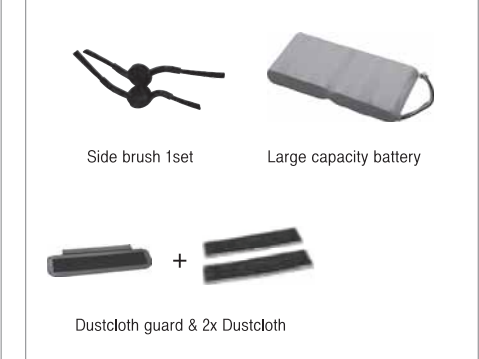
Installing Product  
Basic cleaning  
Product Maintenance  
Information Display  
Remote Controller



#### ※Basic components



#### ※Optional components



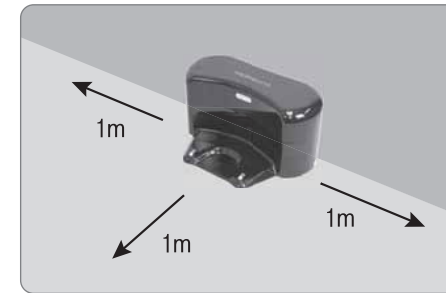


## Installing Product

### Installing the charger

1. Plug the adapter power cord in the adapter and connect with the power outlet.
2. Connect the charger adapter with the charger.
3. Arrange the position of the charger.

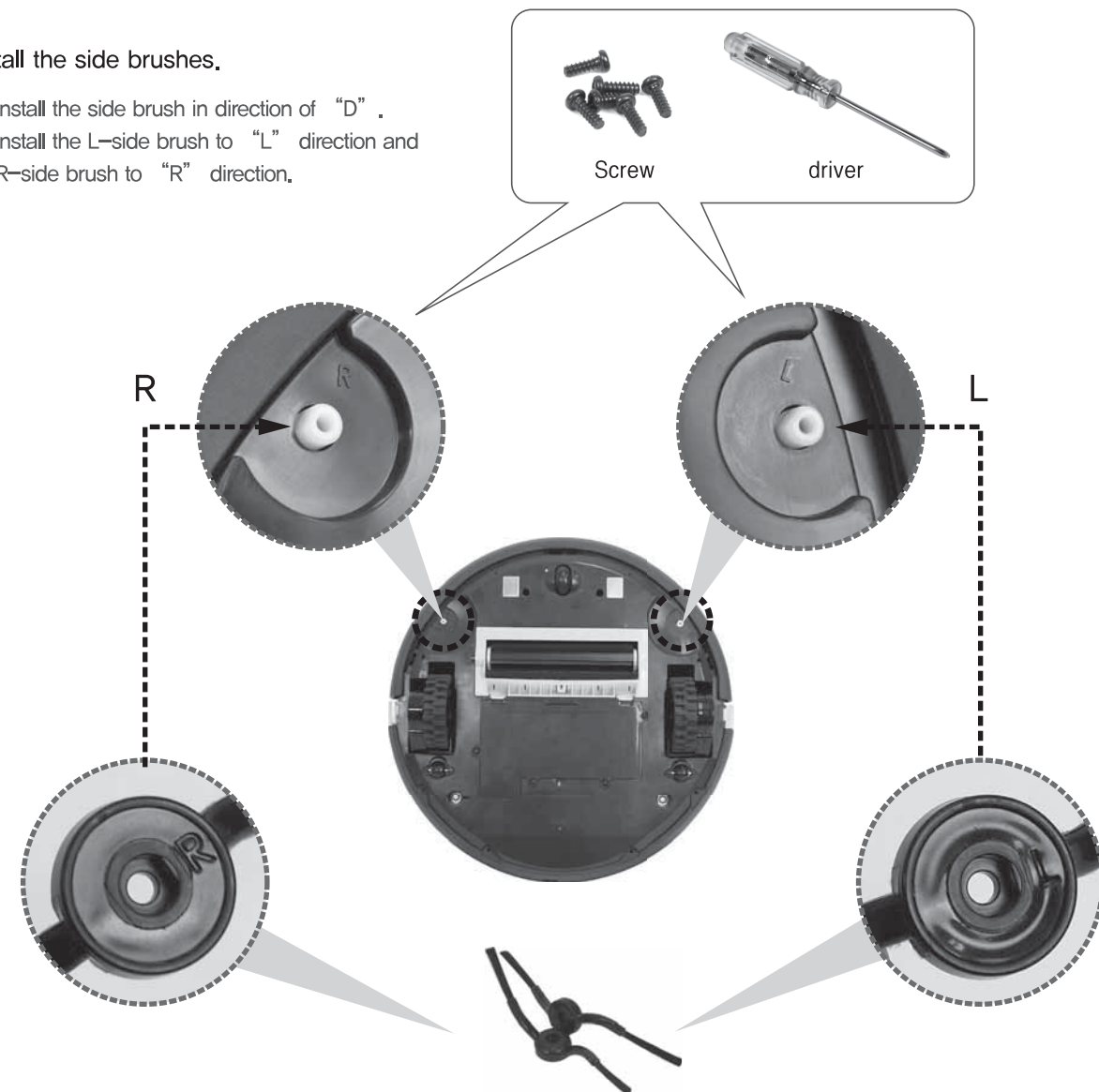
• The charger should have at least 1m clearance to the front and side.



### Installing the side brush

Install the side brushes.

- Install the side brush in direction of "D".
- Install the L-side brush to "L" direction and
- R-side brush to "R" direction.



## Basic Cleaning

### Automatic cleaning

1. Turn the power on of the main body.
2. Press the [START/STOP] button.

Main body button	Remote controller button	Main body button	Remote controller button

3. The automatic cleaning gets started.

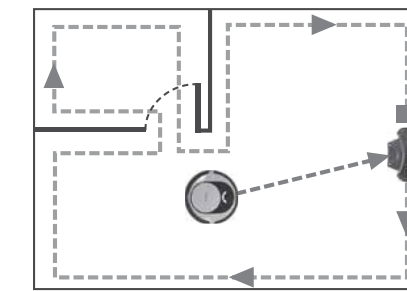


◆ If there is a carpet or other objects ahead of the charger in cleaning with the dustcloth, the robot cleaner may fail to reach the charger.

### Corner cleaning

The robot cleaner performs cleaning following the wall of a current room. When the cleaner makes a full circle of the room, it stops cleaning.

1. Turn on the power of the robot cleaner, and press the corner cleaning of the remote controller.
2. After cleaning is completed, the robot cleaner returns to the charger.

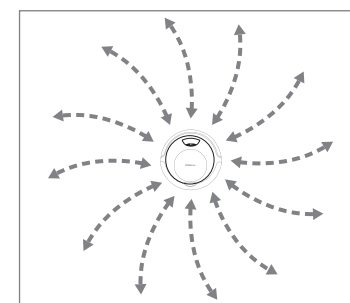


Main body button	Remote controller button
None	

### Focused cleaning

From the current position, the robot cleaner performs focused cleaning over the 1 m-radius area.

1. Turn on the power.
2. Start the focused cleaning.
3. After cleaning is completed, the robot cleaner stops at its current place.



Main body button	Remote controller button



◆ If the site has many obstacles around it, the cleaning may not be successful due to interference from them.

### Shadow cleaning

It is possible to clean the spaces such as under a bed or furniture intensively.

1. Place the robot cleaner near the bed.
2. Turn on the power of the cleaner.
3. Select the mode for cleaning under the bed.
4. After cleaning is completed, the robot cleaner will return to the charger.



◆ Use the product with the room light turned on. In a dark room, the product cannot recognize the space under the bed.

◆ In a dark room, the product may see all the space as under the bed.

Main body button	Remote controller button